



Laser Technology Inc.

Advanced NDT Systems

Model LTI-5100 Digital, Mobile Shearography System



System Features

- Remote Control of all Camera functions
- Digital, Phase Step and Phase Reversal Real-time Subtraction Modes
- All mode Operation with User set macros
- Use on Base, Tripod Lift or Scan Gantry
- Powerful image Processing Suite
- Portable
- 2 Models
 - 5100 150 mw Laser
 - 5100e External Laser to 10 Watts

Benefits

- Large Area Inspection
- High Through-put
- Real-Time Imaging of:
 - Delaminations
 - Disbonds
 - Damage
- Large increase in Aerospace manufacturing productivity



The LTI-5100 is used for critical NDT inspection on these and many other programs.



Laser Technology Inc.

Advanced NDT Systems

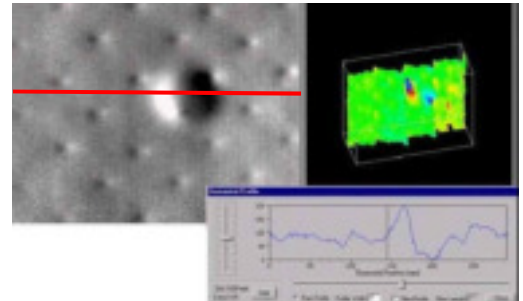
Model LTI-5100 Digital, Mobile Shearography System

Technical Description:

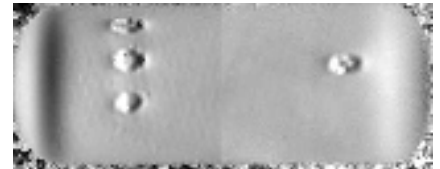
The LTI-5100 is a modular, all mode, digital Shearography Camera System featuring complete Remote control of camera pan, tilt, zoom, iris, focus and shear vector as well as laser beam X/Y steering and Beam expansion. The LTI-5100 consists of the SC-5100 Digital Shearography Camera with built-in or external laser Remote Control Console, and the IP-5100 Image Processing Computer, all interconnecting cables, 2 Manuals and a One Year Warranty.

Optional Equipment:

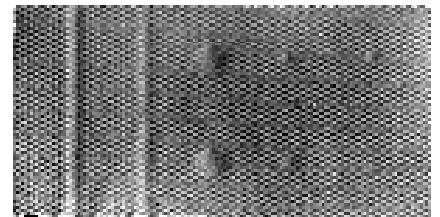
- Tripod and Adapter Plate
- MECAD- 100, 200 Vibration Stress Units
- ACAD-100, 200 Acoustic Stress Units
- TS-100 Thermal Stress Unit
- Vacuum Windows and Generators
- LTI-9000 Vacuum Test Chambers
- Gantry and Mobile Lift Systems



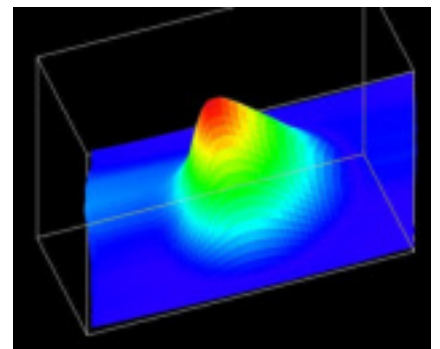
LTI-5100 has Powerful Image Analysis tools for precision defect measurements.



COPV impact damage.



Aluminum Honeycomb disbonds.



3-D Quantitative Deformation Analysis

| | |
|--------------------------------------|---|
| Shear Camera | Digital Phase Stepping Shearography Camera, real time mode |
| Stress Methods | All Mode |
| Laser | Built in 150mW @532nm (Green) Laser Class IIIa (Safe for operator) |
| CCD Resolution | 768x494 pixels |
| Zoom | F1.0, 8 w/2x Converter (effective performance F4, 16) |
| Shear Optic Placement | Shear Optics located in front of imaging lens, which gives the absolute best image quality with no distortion to the shearography image |
| Shear Angle | Continuously adjustable 0° - >3° |
| Shear Direction | Continuously adjustable 0° - 360° |
| Field of View | Adjustable, x (distance) |
| Measuring Sensitivity | 0.05 μm/shear distance |
| Computer and Remote Control Features | Camera Lens: Iris, Focus, Zoom, Shear Vector: X/Y Shear 0-5°, 0-360° Laser: X/Y Steer, Beam Expansion Motion: (Pan350°, Tilt 120°) Laser Spot Projector for Precision Image Calibration |
| Manual Adjustments: | Laser Shutter on/off |

The LTI-5100 is manufactured in the USA under US and foreign patents. 6,717,681; 5,257,088; 5,094,528 Additional patents applied and Pending. Specifications are subject to change without notice. 1/08



Laser Technology Inc.
1055 West Germantown Pike, Norristown, PA 19403 USA
Tel +610-631-5043 • www.LaserNDT.com

